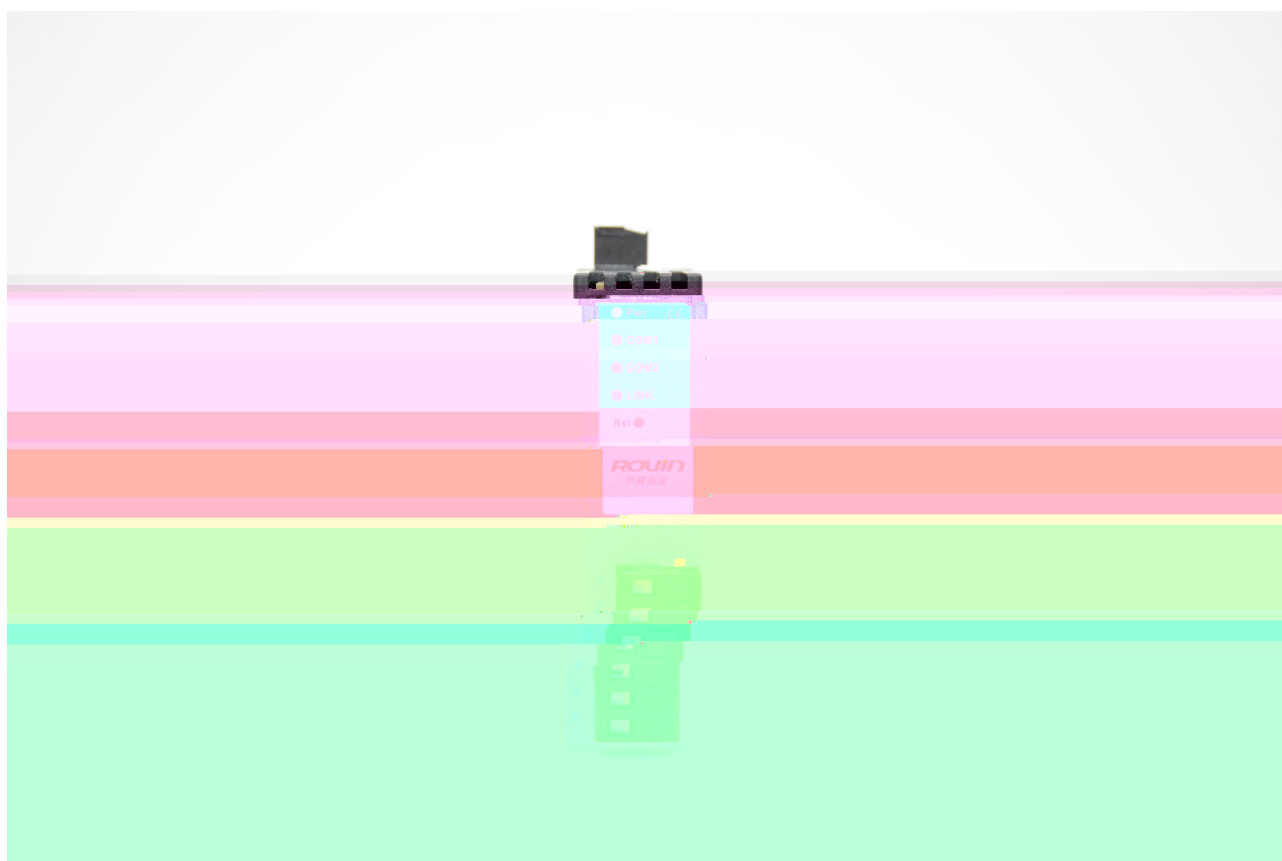
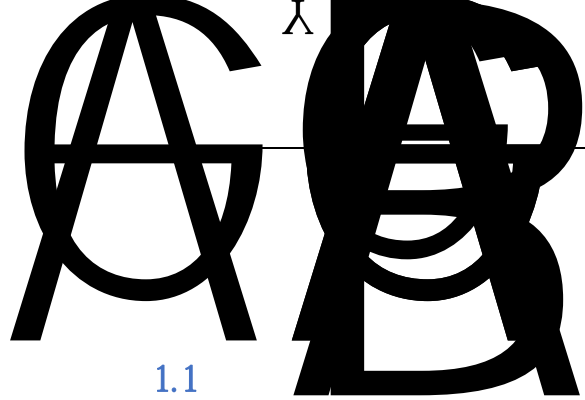




RVNet-MB

Modbus

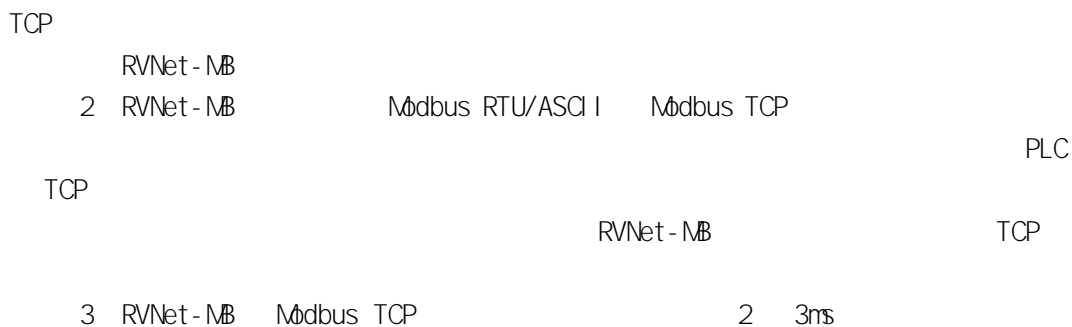




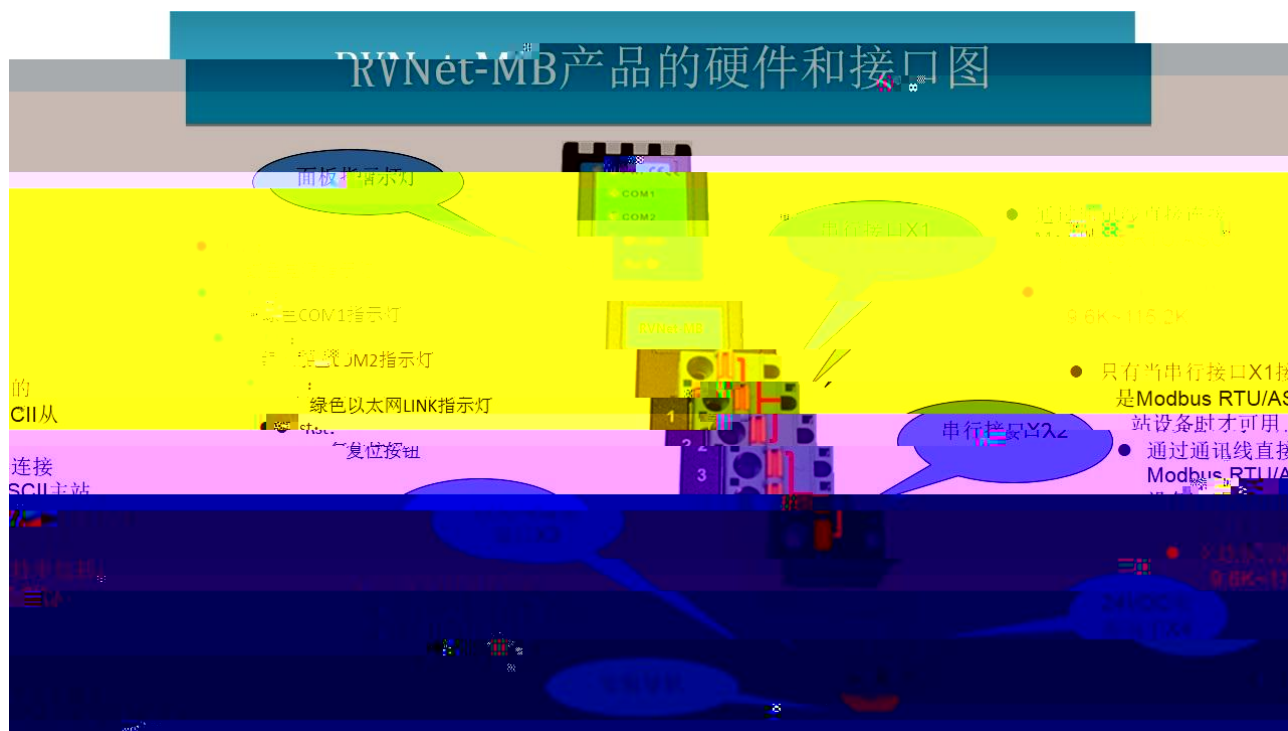
1.1

RVNet-MB





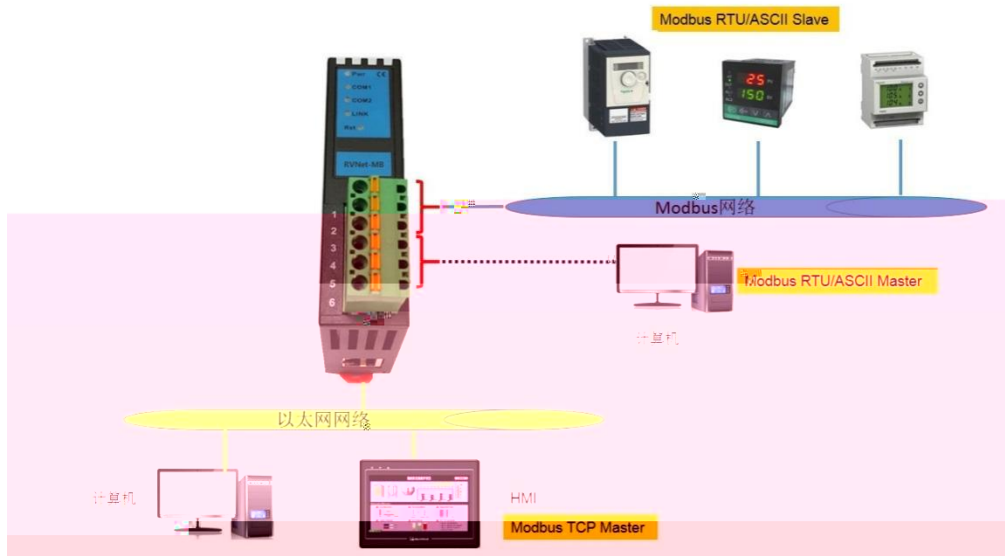
2.1



1.	X1	Modbus	RVNet - MB	Bus	— TCP	Modbus
➤	Modbus	RVNet - MB	Modbus	Modbus	Modbus	Modbus
➤	Modbus	X2	RVNet - MB	Bus	-- TCP	X2
2.	X2	X1	Modbus	RVNet - MB	Bus	— TCP
3. Rst:	5-6	COM				

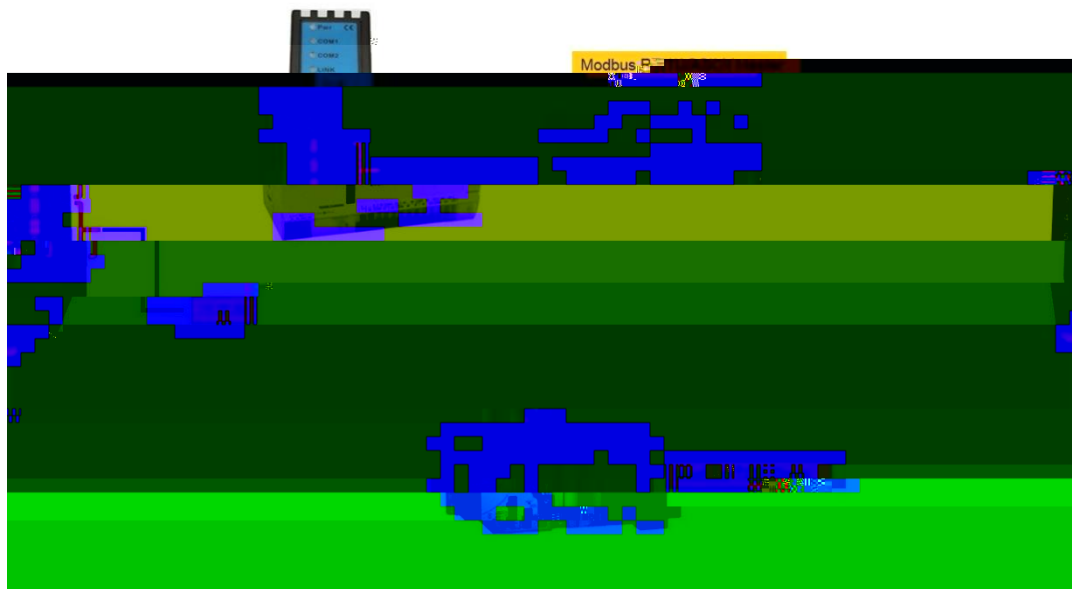
2.2

2.2.1



1. Modbus Modbus X2
 2. 6 Modbus RTU/ASCII
 3. Modbus RS485 RS232 Modbus
- Mosbus

2.2.2



1. Modbus RTU/ASCII Modbus TCP
2. X2

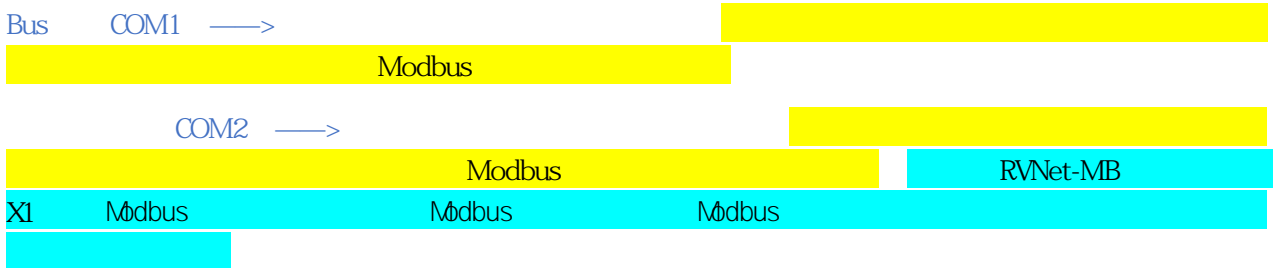
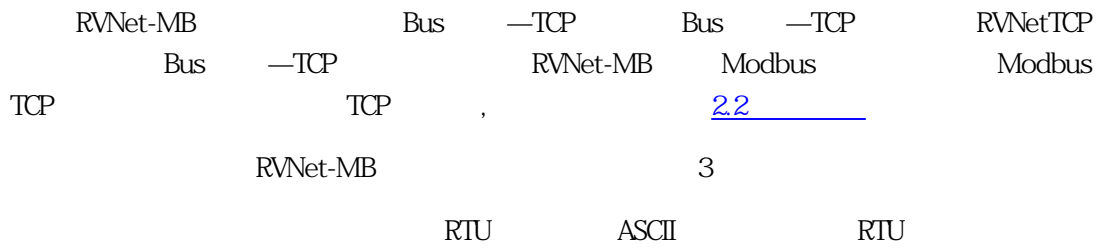
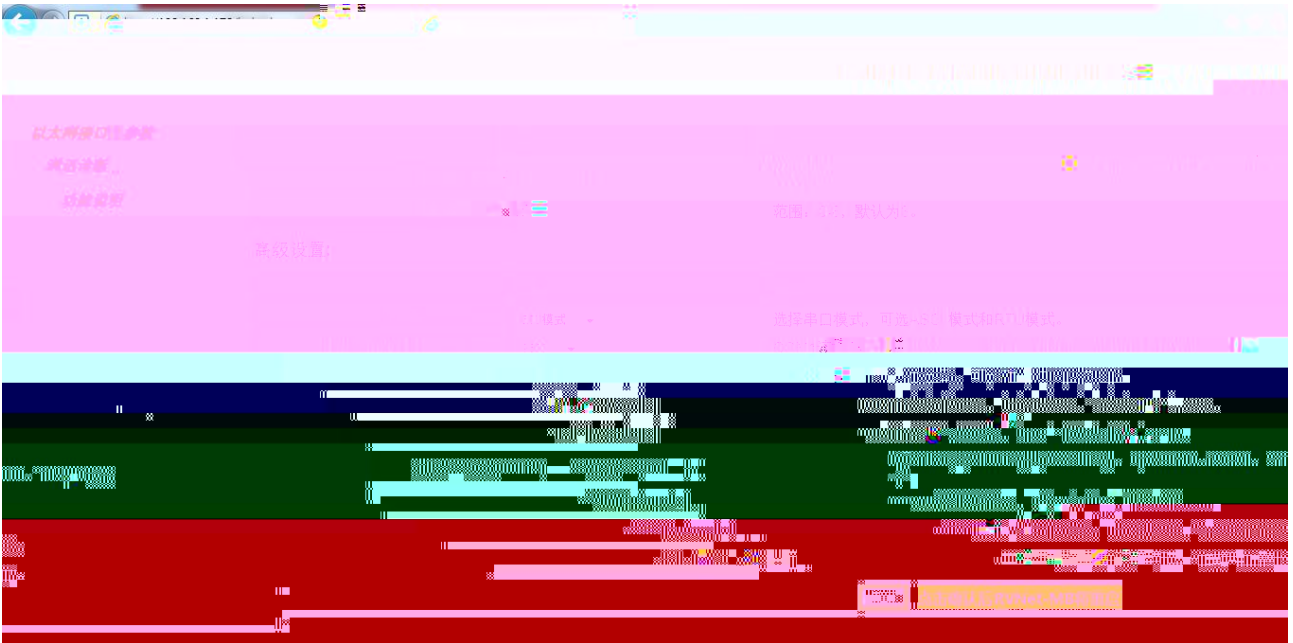
23

RVNet-MB	4	X1	X2	RJ45	X3	X4
----------	---	----	----	------	----	----

Internet Explorer t

192.168.1.1 t r

3.2.1



3.2.2



RVNet-MB IP

[]

RVNet-MB

IP

ModbusTCP

502

IP

RVNet-MB

IP

Bus

—TCP

RVNet-MB

Bus

—TCP

Modbus

“ ”

Bus

—TCP

“

”

modbus

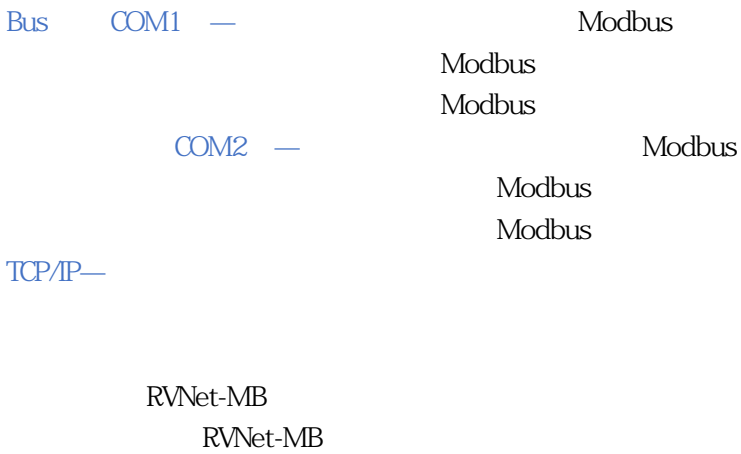
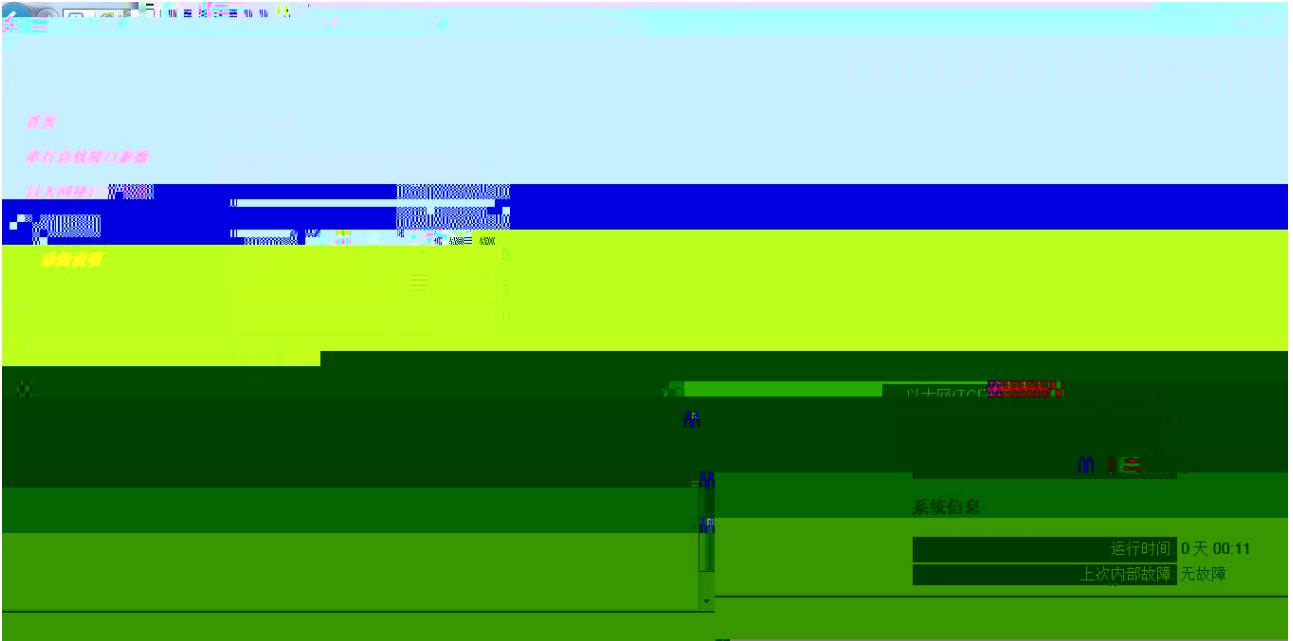
Bus

—TCP

[]

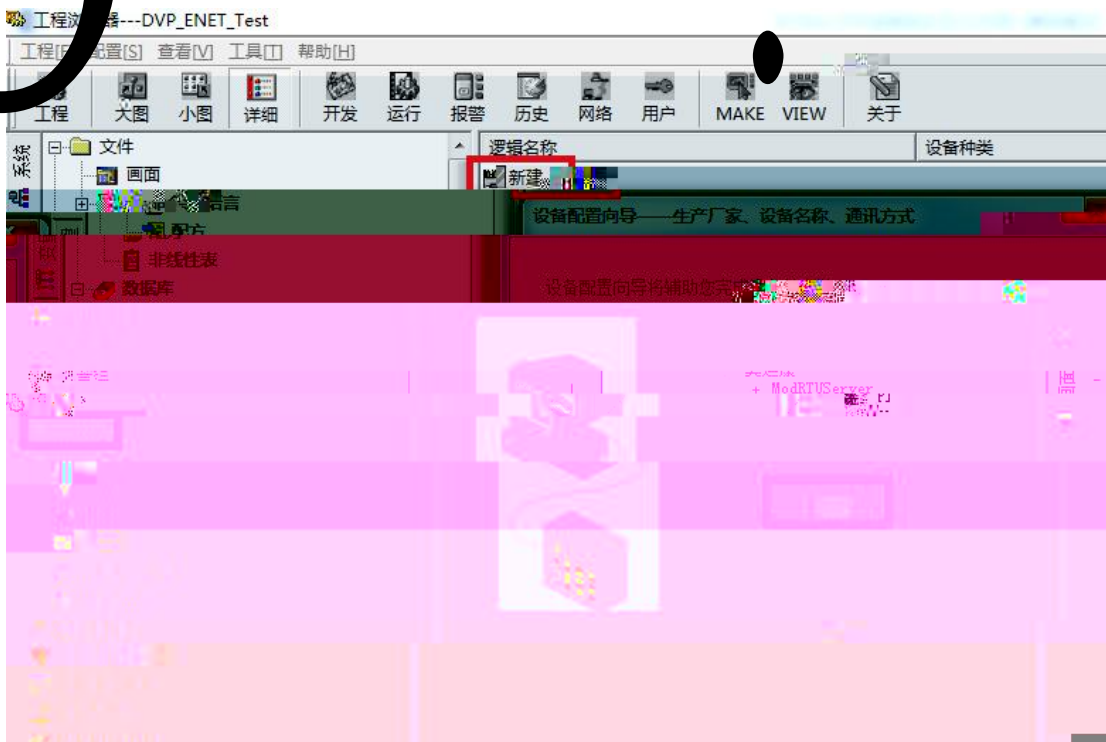
RVNet-MB

3.2.3



4.1 RVNet-R

- 1.
2. " COM" " " " ModbusTCP—TCP" " "



3.

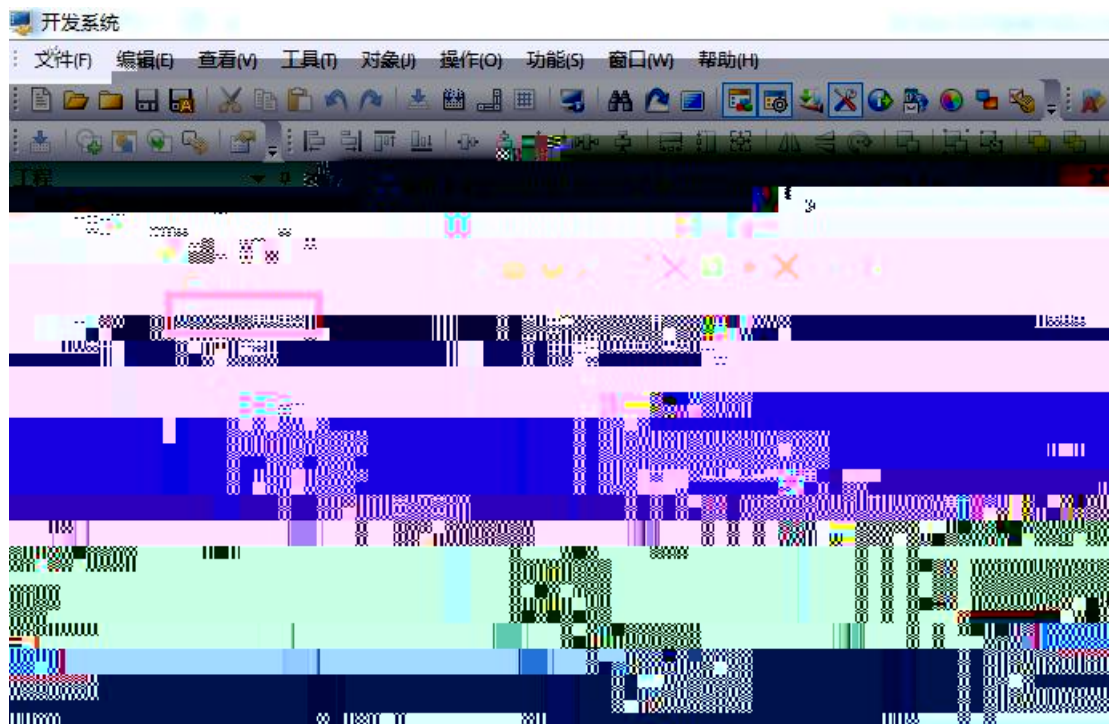


4. RVNet-MB IP 12,60 QHU-4S-EF, QHU-1° A Y@D



4.2 RVNet-MB

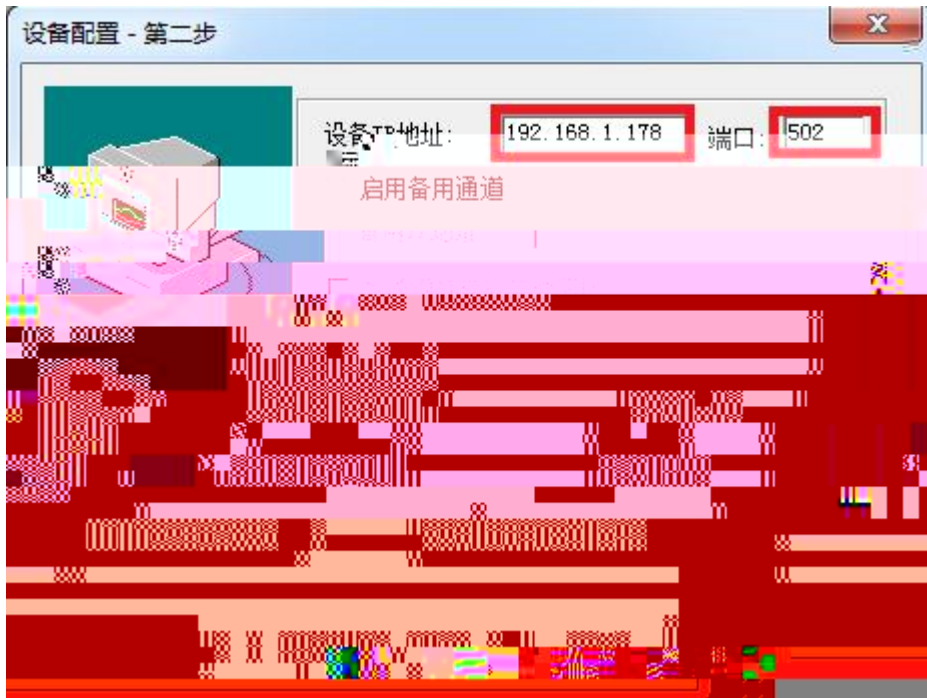
1. " IO " PLC " MODI CON -MODBUS TCP "



2. " " DVP " " 1



3. " IP " RVNet-MB IP 192.168.1.178 " " 502

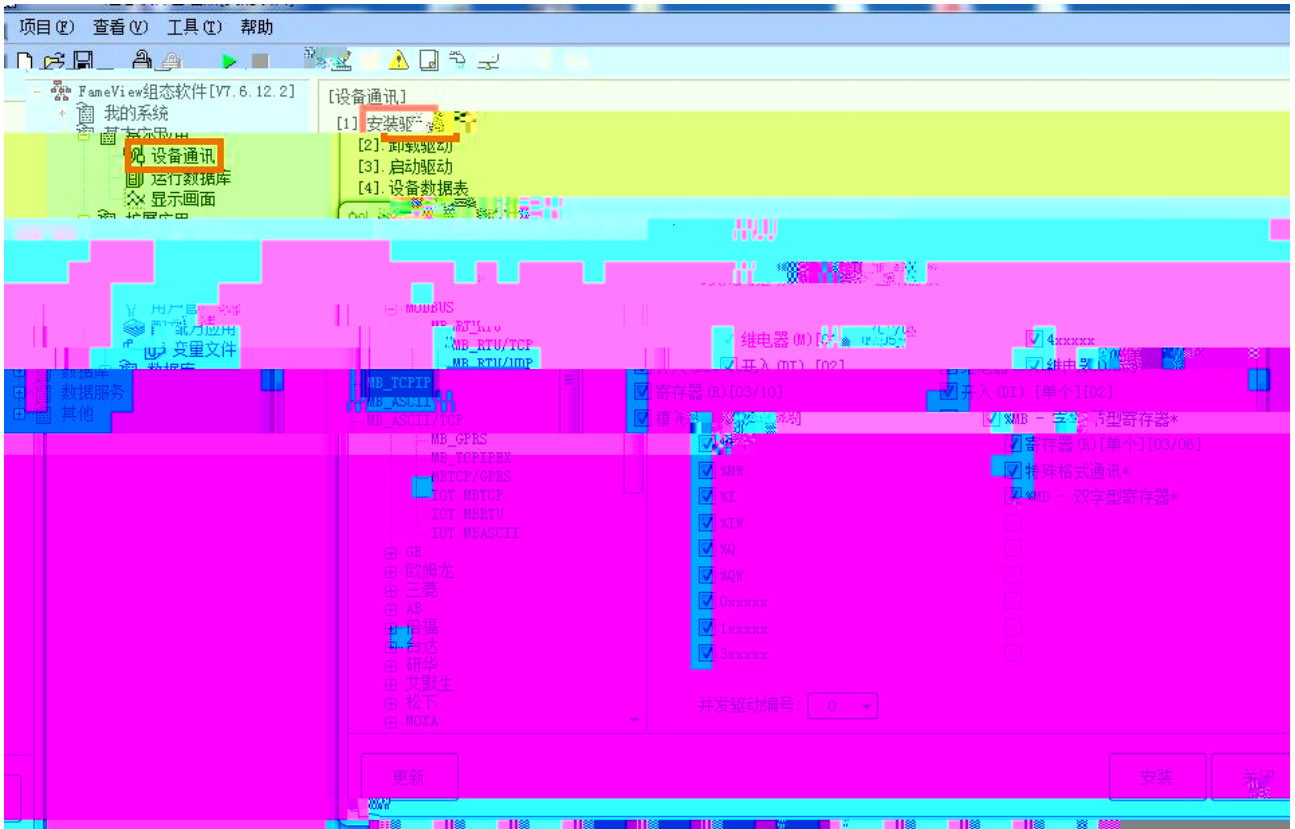


4.

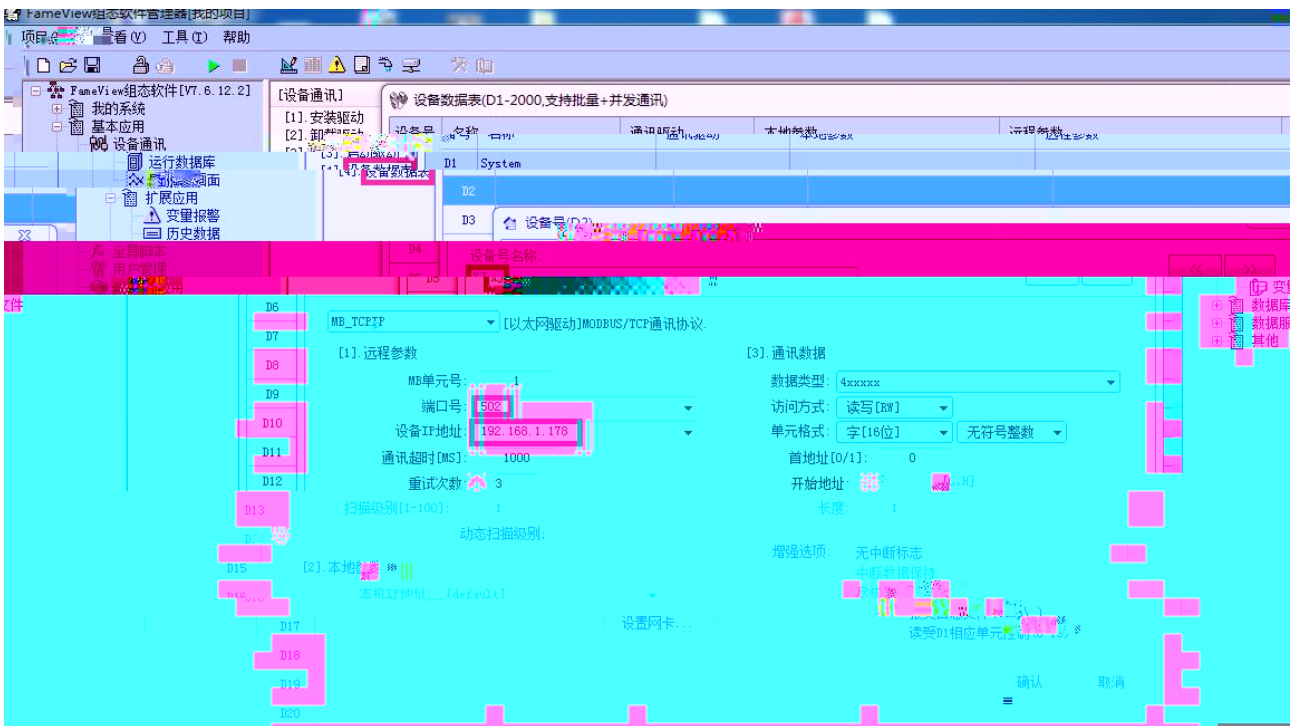


4.3 RVNet-MB

1. " " " " " " MB_TCPI P " "

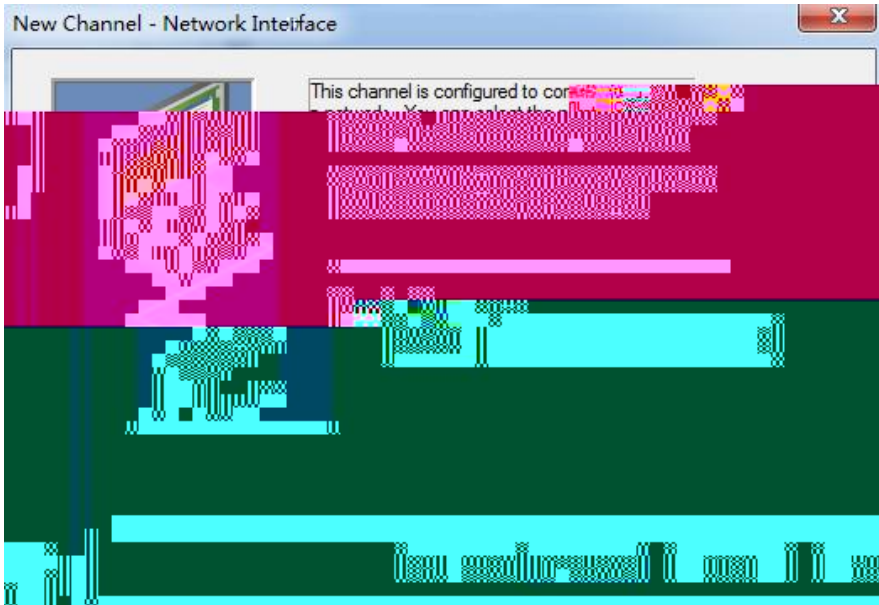


2 " " " " XJ " MB " MB
 Modbus " " 502 " IP " RVNet-MB
 IP 192.168.1.178 " "

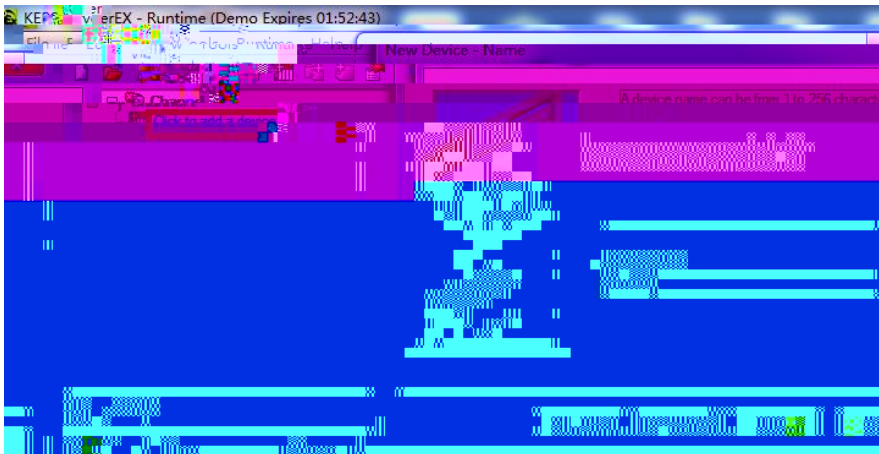


4.4 RVNet-MB Kepware

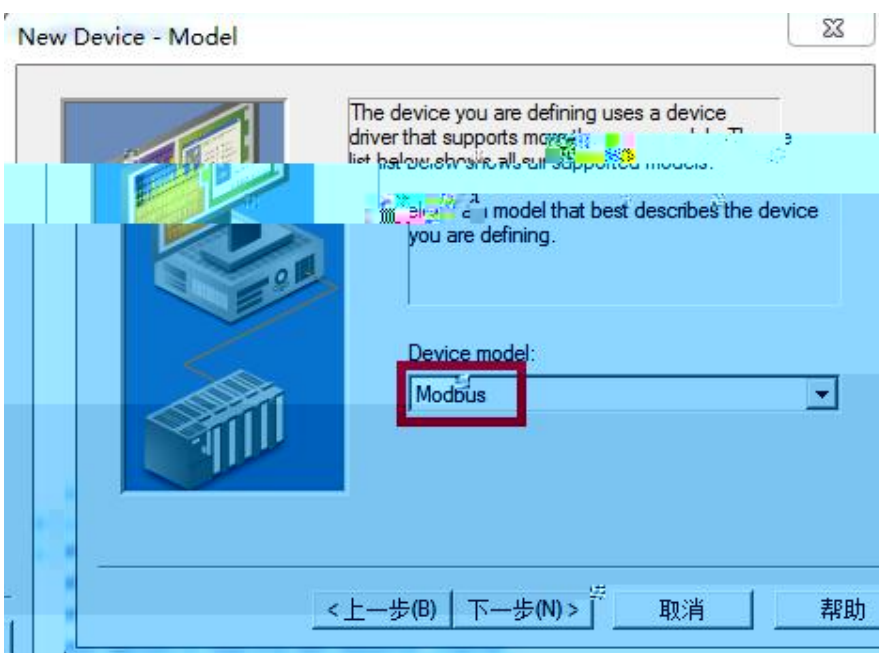
1. KEPServerEX “ Click to add a channel ” i



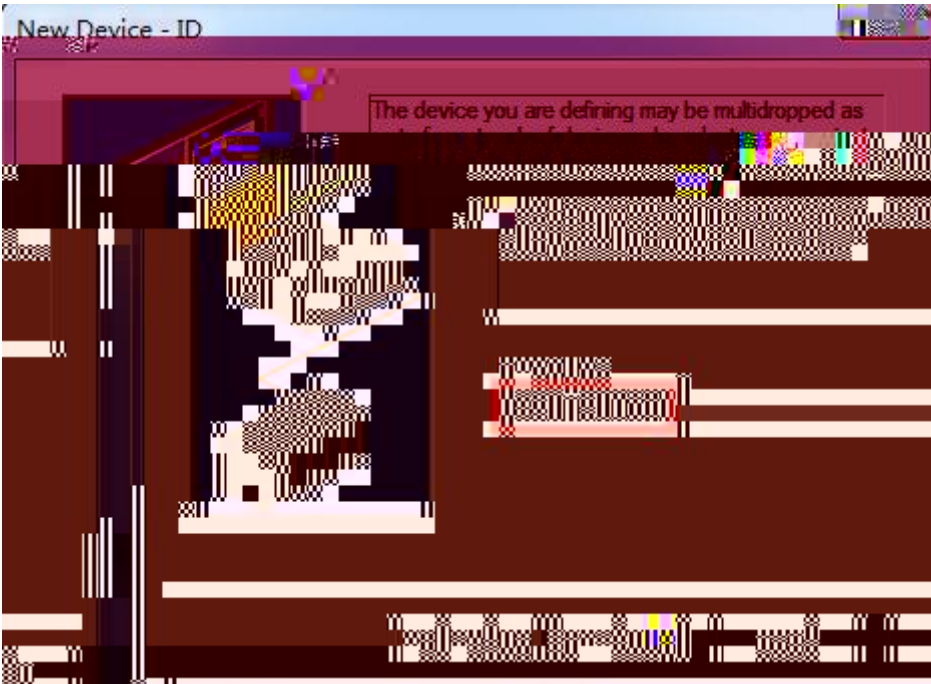
4. " click to add a device" ,



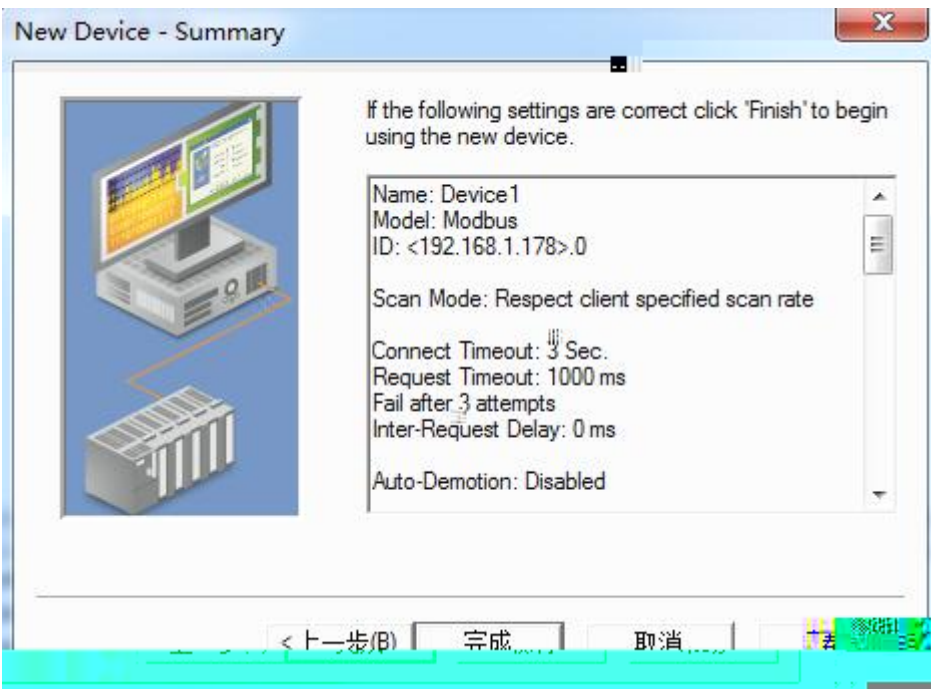
5. " Device Model " " Modbus"



6. " Device ID" IP 192.168.1.178.0 Modbus

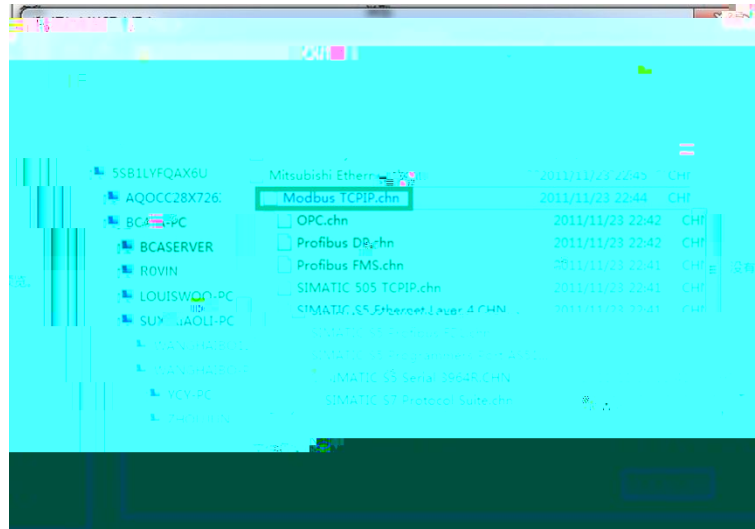


7.



4.5 RVNet-MB WINCC

1. Wincc " " " i



2. “Modbus TCP/IP #1” “ ” “ ” “ ”
 “ CPU ” “ 984” “ ” RVNet-MB IP “ ” 502 ”
 “ Modbus



Modbus

Pwr COM1 COM2 Link
 IEEE 802.3 Link/Active Auto-MDIX
 RJ45
 10/100Mbps
 Modbus TCP

TCP	6
X1	RS485 RS232
	9.6K~115.2Kbps
	Modbus RTU/M

2755

250101

0531-88689022

0531-88689022

111

266107

0532-68894021 83029299

0532-83029299

18753243991 garywei@dingtalk.com

www.roviniot.com

